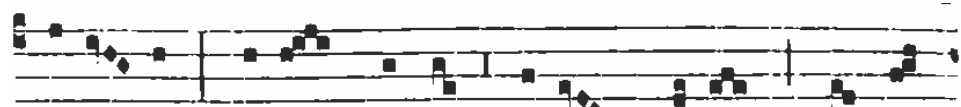


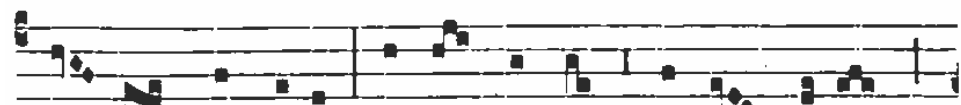
Hymnus.
toni j.



CRUX fidé-lis, inter omnes Arbor una



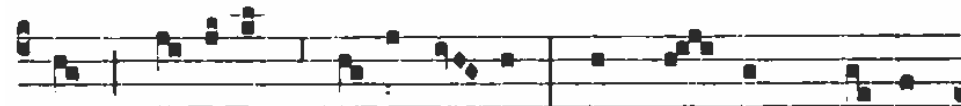
nóbi- lis: Nulla silva ta-lem pro-fert Fronde,



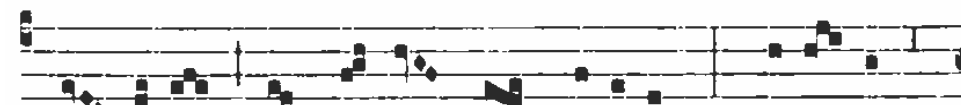
flo- re, gérmine: Dulce lignum dulces clavos,



Dul-ce pon-dus sústinet. 2. PANGE lingua glo-ri-ó-



si Præ-li-um certámi- nis: Et su- per Cru-cis



tro-phæ-um, Dic tri- úm-phum nóbi-lem: Quá-li- ter



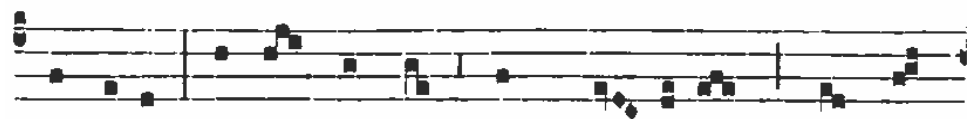
Re-démptor orbis Immo-lá- tus vice-rit. 3. DE



pa-réntis pro-toplásti Fraude Factor cóndo- lens,



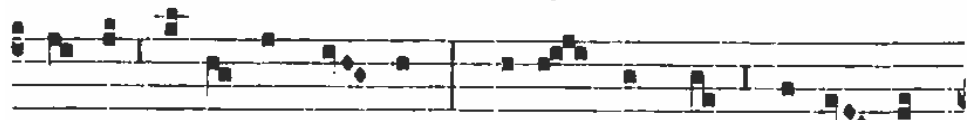
Quando pomi noxi- á-lis Morsu in mor-tem



córru-it, Ipse lignum tunc no- távit, Damna



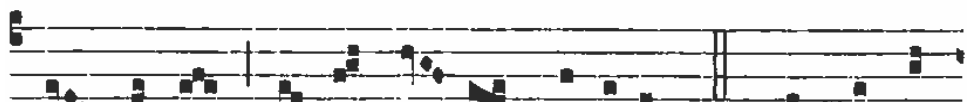
li-gni ut sólveret. 4. Hoc opus nostræ sa-lú-tis



Ordo depo-pósce- rat, Multi- fórmis prodi- tó-



ris Ars ut ar-tem fálleret: Et me- dé-lam fer-



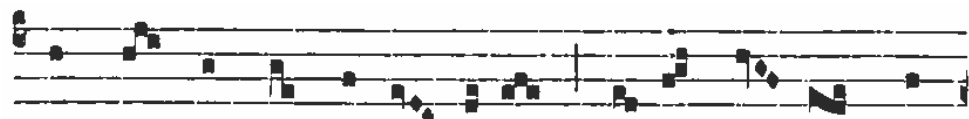
ret inde, Hostis un-de læserat. 5. QUANDO ve-



nit ergo sacri Ple-ni-túdo témpo- ris, Missus



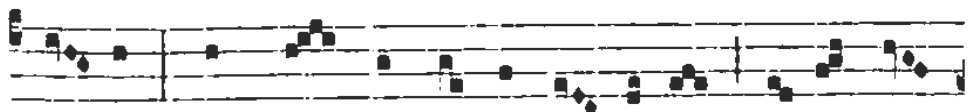
est ab arce Patris Na-tus or-bis Cóndi-tor:



Ac de ventre virgi- ná-li Ca- ro fa- ctus prod-



i- it. 6. VAGIT infans inter arcta Cón-di- tus præsæ-



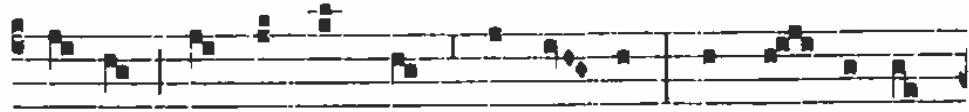
pi- a : Membra pannis invo- lí-ta Virgo ma-



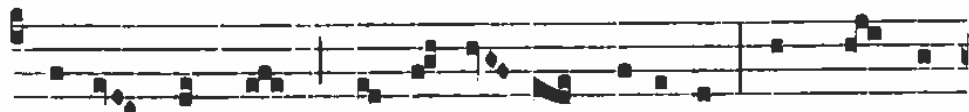
ter ál-ligat, Et ma- nus, pe- désque, et cru- ra,



Stricta cin- git fásci- a. 7. LUSTRIS sex qui jam per-



á-ctis Tempus implens córpo- ris, Se vo- lén-te



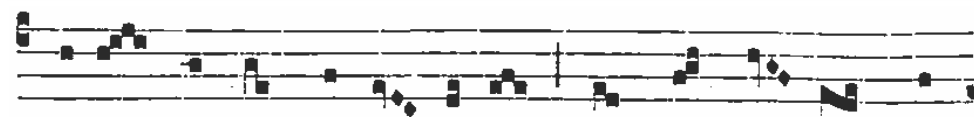
na- tus ad hoc, Passi- ó- ni dédi- tus, Agnus in



Cru- cis le- vá- tur Immo- lán- dus sti- pi- te. 8. Hic



acé-tum, fel, arúndo, Spi-na, clavi, lance- a :



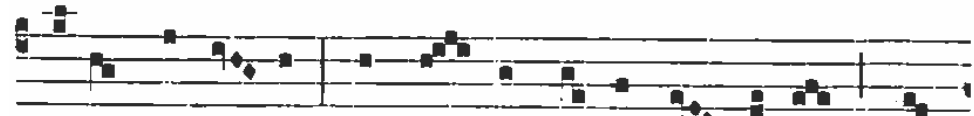
Mi-te corpus perfo- rá-tur, Sanguis, un- da pró-



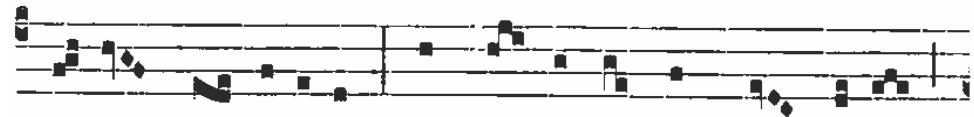
flu- it : Terra, pontus, astra, mundus, Quo la-ván-



tur flúmine! 9. FLECTE ramos arbor al-ta, Tensa



laxa visce- ra : Et ri- gor lentéscat il-le, Quem



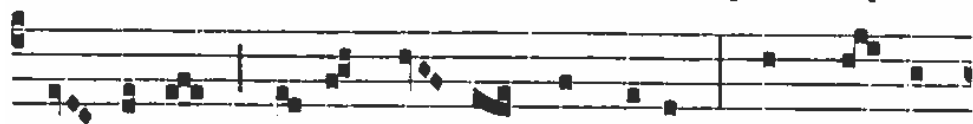
de-dit na- ti-vi-tas : Ut su- pénni membra Regis




Mi- ti ten- das sti-pi-te. 10. SOLA digna tu fu- í-



sti Fer-re sæcli pré-ti- um, Atque portum præ-



pa- rá-re Nauta mun-do náufrago: Quem sa- cer



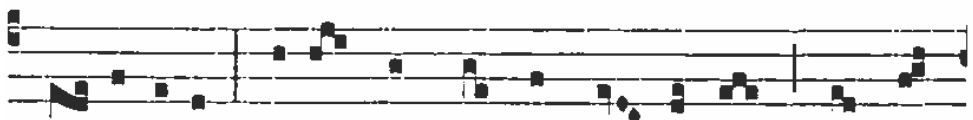
cru- or per- únxit, Fu- sus A-gni córpore.



II. GLORI- A et honor De- o Usquequáque al-



tíssi- mo, Una Patri, Fi-li- óque, Incly-to



Pa- rácli-to: Cu- i laus est et po- téstas Per æ-



tér- na sæcu- la. A- men.