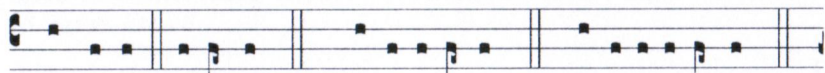
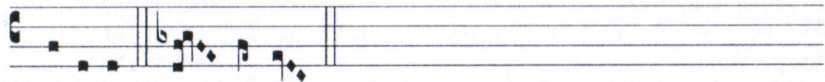


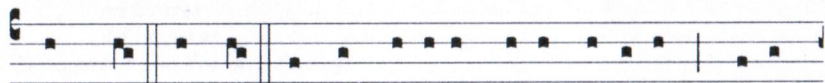
MISSA PROFESTIS DIEBUS



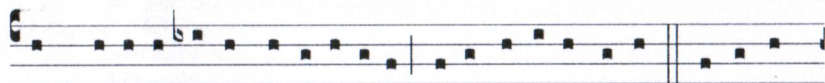
KY-RI- E e-léison. *ijj.* Christe e-léison. *ijj.* Ký-ri- e e-léison. *ij.*



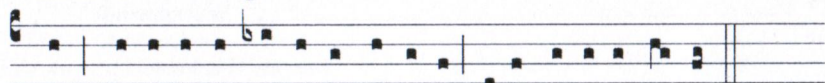
Ký-ri- e e- léison.



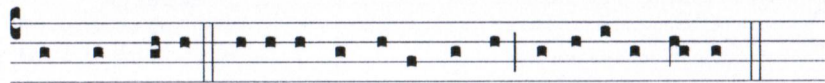
SANCTUS, Sanctus, Sanctus Dóminus De- us Sá-ba- oth. Ple-ni



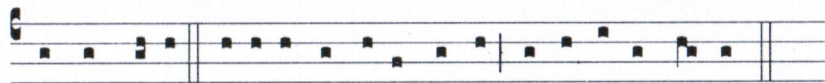
sunt cæ-li et terra gló-ri- a tu- a, Hosánna in excélsis. Be-ne-dí-



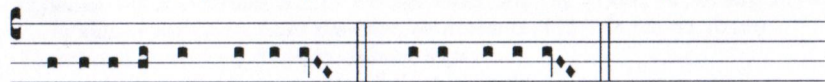
ctus, qui ve-nit in nómi-ne Dómi-ni, Hosánna in excél-sis.



AGNUS DE- I, qui tollis peccá-ta mundi, mi-se-ré-re no- bis. *ij.*



Agnus De- i, qui tollis peccá-ta mundi, do-na no-bis pa- cem.



BENEDICAMUS Dómino. R̄. De- o grá-ti- as.