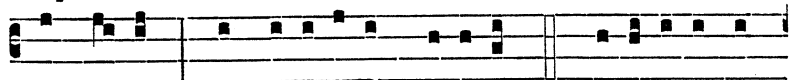
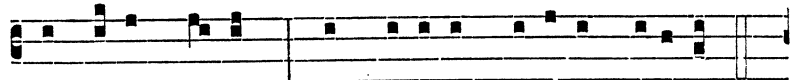


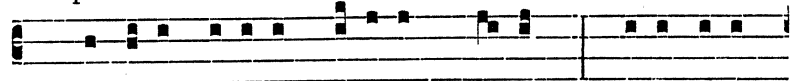
superbos mente cordis su-i. 7. DEPOSU-IT potentes



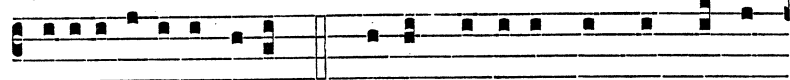
de se-de, * et exal-távit húmiles. 8. ESURI-ENTES



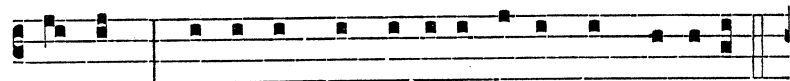
implévit bo-nis : * et dí-vites dimí-sit inánes.



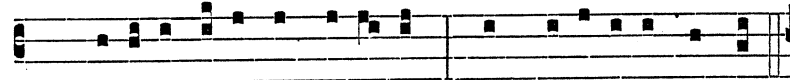
9. SUSCEPIT. Isra-el pú-erum su-um, * recordátus



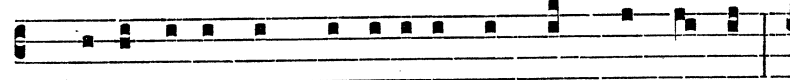
misericórdi-æ su-æ. 10. SICUT lo-cútus est ad patres



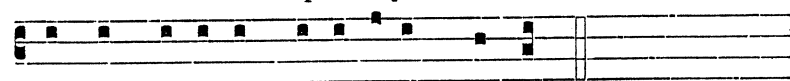
nostros, * Abraham, et sémi-ni e-jus in sæcu-la.



11. GLORI-A Patri, et Fí-li-o, * et Spirí-tu-i sancto :



12. SICUT e-rat in princí-pi-o, et nunc, et semper, *



et in sæcu-la sæcu-lórum. Amen.