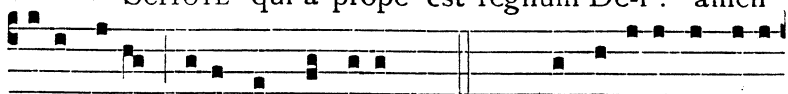
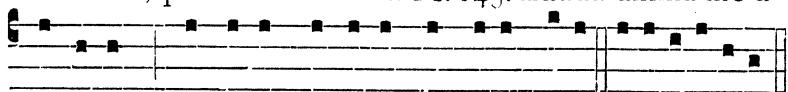


Ant. iij.  
toni  
viiij. SCITOTE qui-a prope est regnum De-i : amen

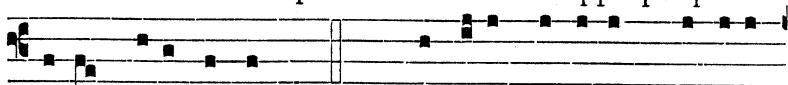


dico vobis, qui-a non tardábit. Ps. 145. Lauda ánima me-a

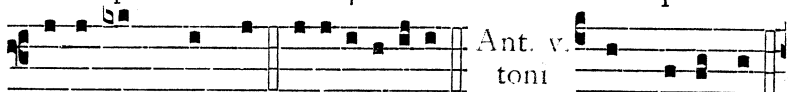


Dóminum, laudábo Dóminum in vita me-a. e u ó u a e.

Ant. iv.  
toni  
j. LE-VATE cápi-ta vestra : ecce appropinquábit



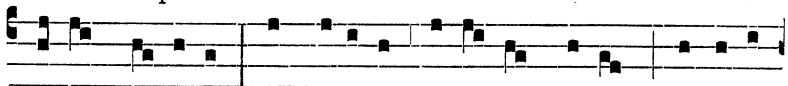
redémpti-o vestra. Ps. 146. Laudáte Dóminum quóni-am



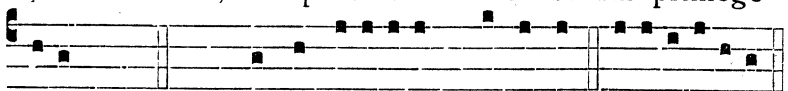
bonus est psalmus. e u ó u a e.

Ant. v.  
toni

viiij. COMPLETI sunt



di-es Ma-rí-æ, ut páreret Fí-li- um su-um primogé-



nitum. Ps. 147. Lauda Jerúsalem Dóminum. e u ó u a e.

Capitulum.

Isaïæ. 9.

**P**OPULUS, qui ambulábat in ténebris, vidit lucem ma-  
gnam : habitántibus in regióne umbræ mortis, lux  
orta est eis.