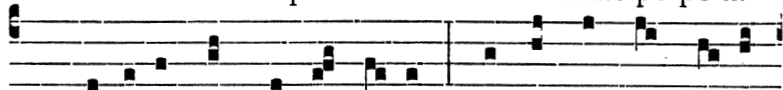


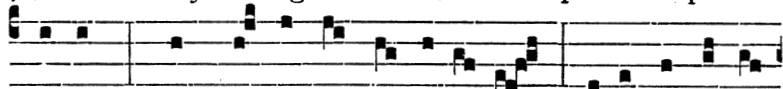
6. ÆQUALIS ætérno Pa-tri, Carnis trophæ-o accíngere :



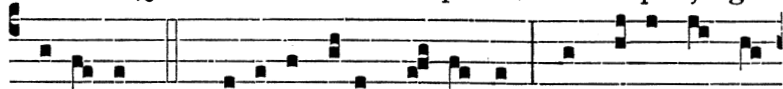
Infirma nostri córpo-ris Virtúte firmans pérpe-ti.



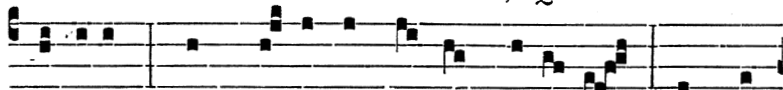
7. PRÆSEPE jam fulget tu-um, Luménque nox spi-rat



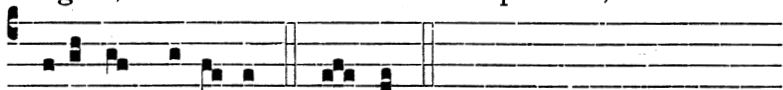
novum; Quod nul-la nox in-térpo-let, Fidéque ju-gi



lú-ce-at. 8. GLORI-A tibi Dó-mi-ne, Qui natus es de



Vírgine, Cum Patre et sancto Spí-ri-tu, In sem-



pitérna sæcu-la. A-men.

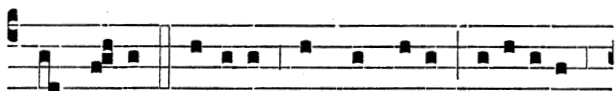
✠ Ista Strophe Glória tibi Dómine qui natus es. dicatur ad omnes Hymnos ejusdem metri, etiam in festis Sancto-rum, usque ad Epiphaniam exclusive.

V. Tamquam sponsus. R̄. Dóminus procédens de thá-lamo suo.

Ad Magnif.

Ant.

vij. toni.



CUM ortus fú-erit sol de cælo, vidébitis