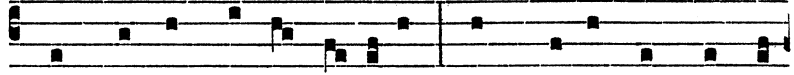


semper sæ- cu-la. 6. GLORI- A ti-bi Dómine,



Qui scandis supra sí-dera, Cum Patre, et sancto



Spí-ri-tu, In sempi-térna sæ- cu-la. A-men.

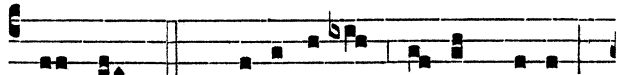
✿ Istæ duæ ultimæ Strophæ dicantur in fine omnium Hymnorum ejusdem metri, usque ad Pentecosten exclusive, nisi aliter sit notatum.

✿ Prædicto modo cantentur Hymni de Communi Sanctorum qui infra idem Tempus cantandi occurrerint, si ejusdem metri fuerint, exceptis tamen Hymnis festorum solemnium.

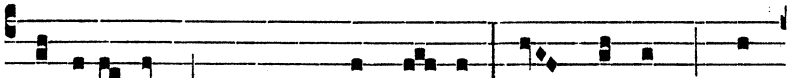
∇. Eleváta est magnificéntia tua, allelúia. R̄. Super cælos Deus, allelúia.

Ad Magnif.

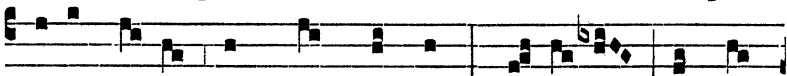
Ant.
j. toni.



PA-TER ma-ni-festá-vi nomen tu-um



homí-ni-bus, quos dedísti mi- hi : nunc autem pro



e- is ro-go, non pro mundo, qui- a ad te