



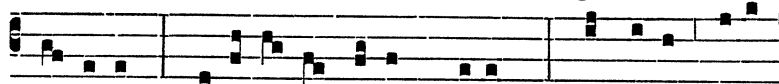
\* Et omni. Gló-ri- a. \* Et omni.

Ad Magnif.

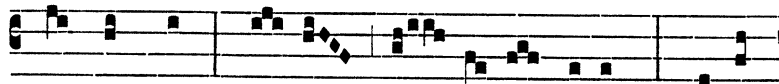
Ant.

vij. toni.

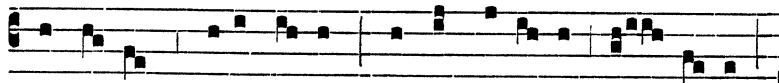
INGRESSUS Rápha-el án-ge-lus ad



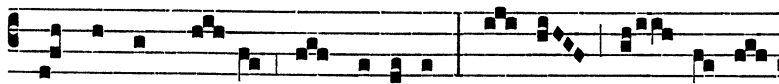
To-bí-am sa-lu-tá-vit e-um, dicens : Gáudi-um tibi



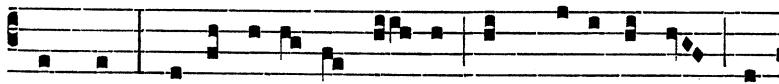
semper sit. Cu- i To- bí- as a- it : Qua- le



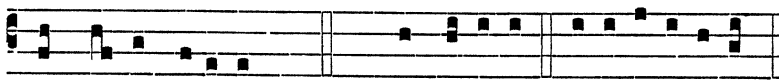
gáudi- um mihi e- rit, qui in ténebris sé- de- o,



et lumen cæ- li non víde- o? Cu- i An- ge- lus



inquit : Forti á- nimo e- sto, in próximo est ut



a De- o curé- ris. Cant. Magní- ficat. e u ó u a e.

☘ Si de Feria iv. aut de Feria vi. quatuor Temporum Septembris non fiat Officium, nec Memoria in Vesperis est facienda.