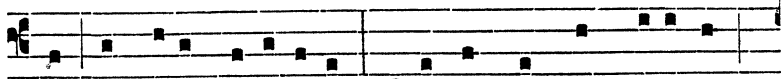


De-o Usquequaque al-tíssimo, Una Patri, Fi-li-ó-



que, Inclyto Parácli-to, Cu-i laus est, et potéstas



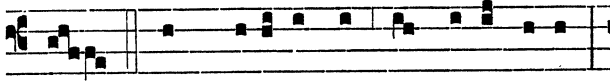
Per ætérna sæcula. A-men.

V. Domum tuam Dómine decet sanctitúdo. T. P. Alle-lúia. R̄. In longitúdinem diérum. T. P. Allelúia.

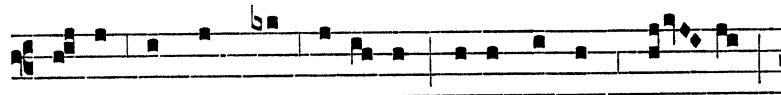
Ad Magnif.

Ant.

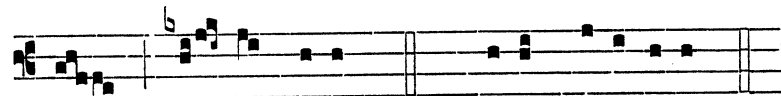
vj. toni.



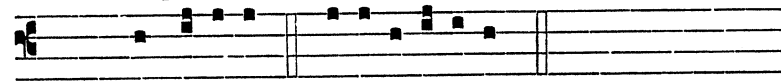
O QUAM metu-éndus est locus iste!



Ve-re non est hic á-li-ud, ni-si domus De - i,



et por-ta cæ-li. T. P. cæ-li, alle-lú-ia.



Cant. Magní-ficat. e u ó u a e.

In primo anno.

Oratio.

DEUS, qui invisibíliter ómnia cónlines, et tamen pro sa-lúte géneris humáni signa tuæ poténtiæ visibíliter osténdis ⁊ templum hoc poténtia tuæ inhabitatiónis illústra: