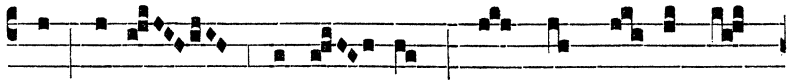


Respon-
sorium
vii. toni. VINE- A me- a e- lé- cta, ego te plantá-



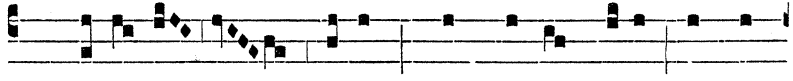
vi, di- cit Dómi- nus : et tu fa- cta es



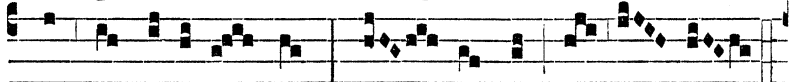
mi- hi ni- mis a- má- ra : * Qui- a



pa- rásti cruce- m Sal- va- tó- ri tu- o.



V. Pópu- le me- us, quid fe- ci tibi, aut in

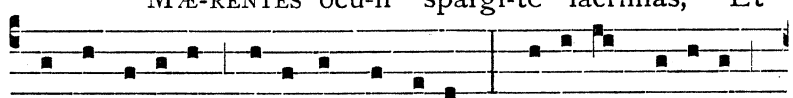


quo contrístávi te? Re- spónde mi- hi.



* Qui- a. Gló- ri- a. * Qui- a.

Hymnus
j.
toni. MÆ- RENTES ócu- li spárgi- te lácrimas, Et



luctu résonent íntima córdi- um : Illá- tas ré- fero