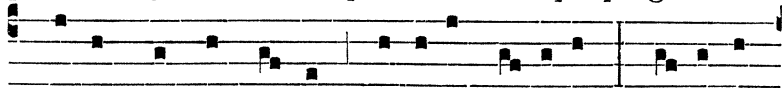


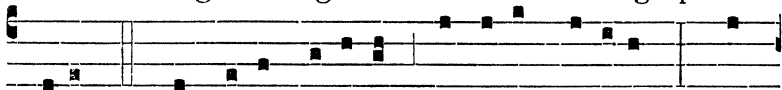
prócre-at. 3. O CLAVI! æqua manet vos quoque grá-ti-a,



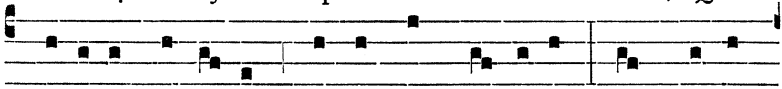
Christi quando sa-cris ártubus ín-si-ti, De-lé-tum



Dómini sángine fí-gi-tis Mortis chi-rógraphum



cruci. 4. TE Jesu Súpe-ri láudibus éfferant, Qui



Clavórum ád-i-tus, sígnaque Lánce-æ In cæ-lo

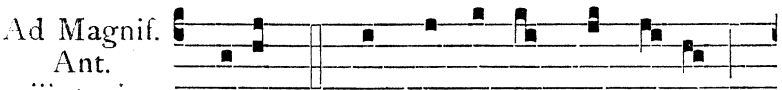


ré-tines, vivus ubi ímpe-ras Cum Patre atque



Pará-cti-to. A-men.

∇. Fodérunt manus meas et pedes meos. R̄. Dinumeravérunt ómnia ossa mea.

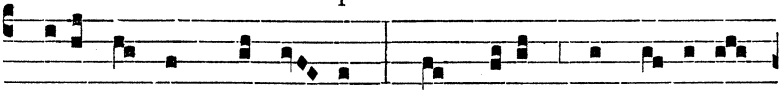


Ad Magnif.

Ant.

ij. toni.

DELENS quod advérsus nos e-rat



chirógraphum decré-ti, quod erat contrá-ri-um