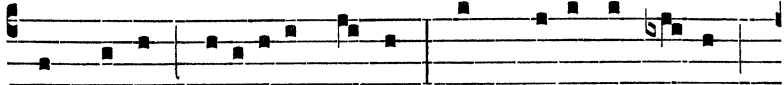
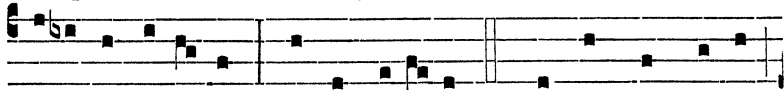


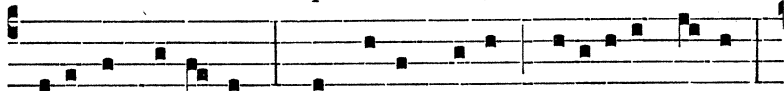
2. QUÆ refert semper veneránda Sindon, Sáanguine



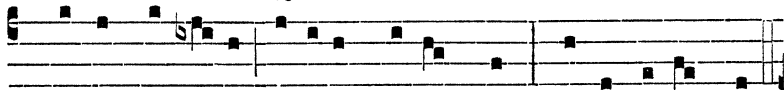
impréssis decoráta signis, Dum cruce ex al-ta



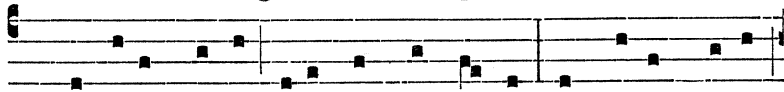
tu-lit invo-lú-tum Corpus I-e-su. 3. REDDIT hæc sævos



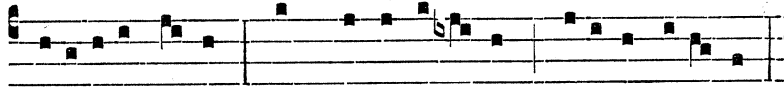
ánimo do-ló-res Quos tu-lit, casum miserátus Adæ,



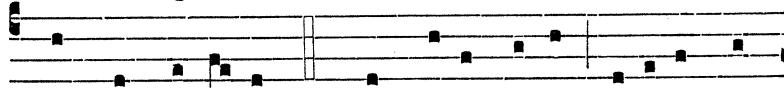
Christus humá-ni géneris Redémptor, Morte perémpta.



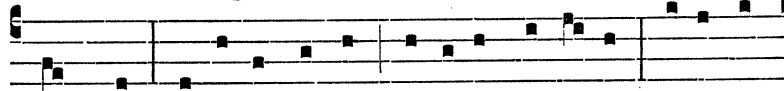
4. SAUCI-UM ferro latus, atque palmas Et pedes clavis,



laceráta flagris Membra, et infi-xam cápi-ti coró-nam



Monstrat imá-go. 5. QUIS pi-us, siccis ócu-lis et



absque Intimi cordis gémi-tu, no-tá-ta Vívaque