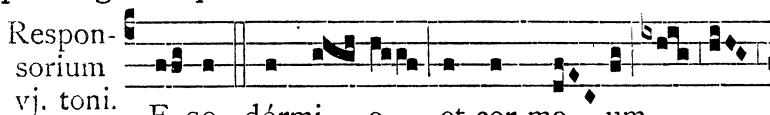


minum. e u ó u a e.

Capitulum.

Cant. 8.

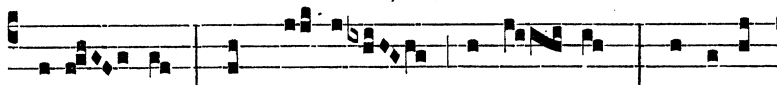
**P**ONE me ut signáculum super cor tuum, ut signáculum super bráchium tuum ꝛ quia fortis est ut mors dilectio, dura sicut inférnus æmulatio : lámpades ejus lámpades ignis atque flammárum.



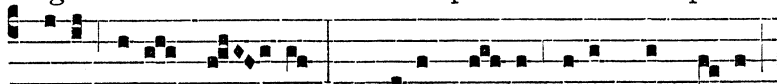
Respon-  
sorium

vj. toni.

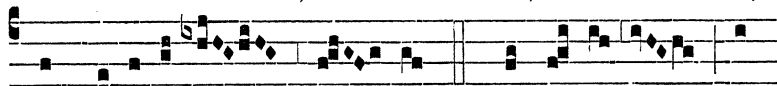
E-go dórmi- o, et cor me- um



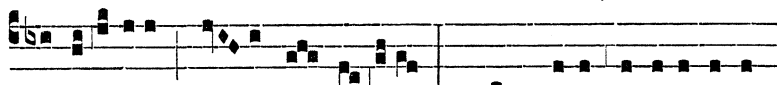
vígi- lat : vox di- lécti pulsán- tis : \* Ape-ri



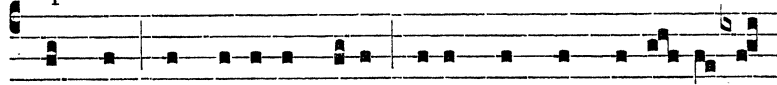
mihi soror me- a, amíca me- a, colúmba me- a,



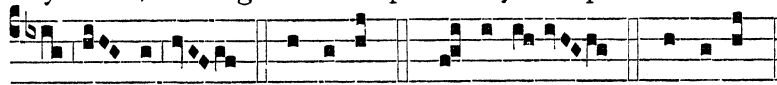
immacu-lá-ta me- a. V. Surré-xi, ut



apé- ri-am di- lécto me- o : mánus me-æ distillavérunt



myrrham, et dí-gi-ti me-i pleni myrrha pre-ti- o-sis-



si- ma. \* Ape-ri. Gló-ri- a. \* Ape-ri.