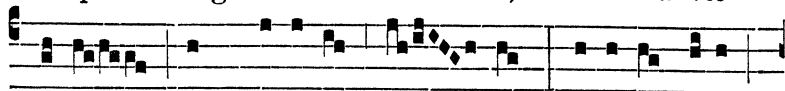
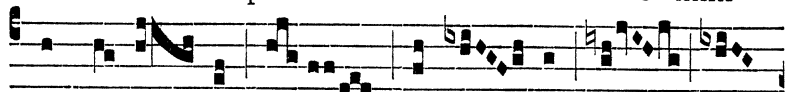


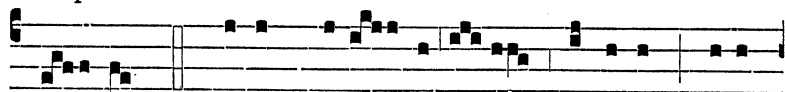
et præ-e-lé-git e-am, et cre-á-vit



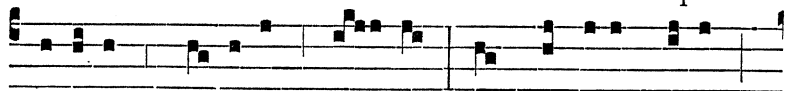
e-am in Spí-ri-tu san-cto : * Ide-o nihil



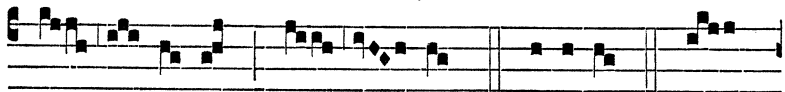
inqui-ná-tum in e-am in-



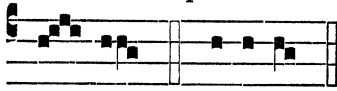
cúr-rit. √. Dedit Marí-æ Dóminus prote-



cti-ónem sa-lú-tis su-æ, et déxtera su-a



sus-cé-pit e-am. * Ide-o. Gló-



ri-a. * Ide-o.

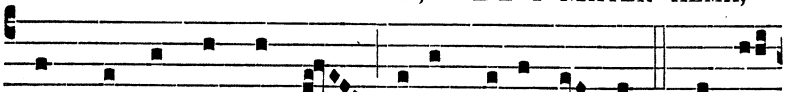
Ad primam Strophem sequen-
tis Hymni genuflectatur.



Hymnus

j.
toni.

AVE MARIS STELLA, DE-I MATER ALMA,



ATQUE SEMPER VIRGO, FELIX CÆLI POR-TA. 2. SUMENS