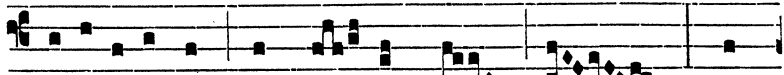


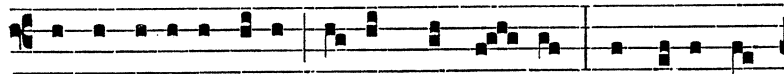
pauper ópibus, sed fide di- ves, pontem



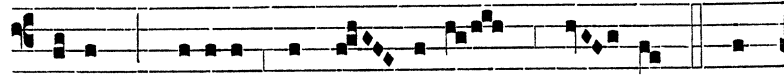
nobi- líssimum aggrés- sus est * In



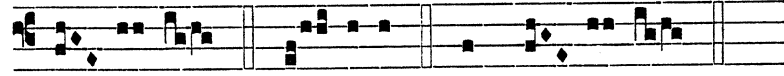
nó- mi- ne Dómi- ni. √. Ad impé- ri-um ejus,



taçta bácu- lo rupes vi- num fundé- bat, et il- li ad



manum plácidi conflu- ébant pi- sces. * In



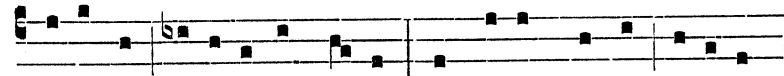
nó- mi- ne. Gló- ri- a. * In nó- mi- ne.

Hymnus

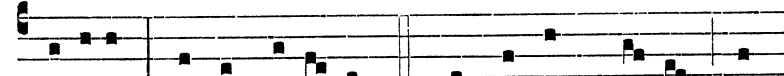
iv.

toni.

AD sacer dó- tis nova Gundisálvi Festa,



decúrsu rede- úntis anni, Cónflu- at, cantu résonans



canóro, Turba fidé- lis. 2. ATTAMEN plausu mo-