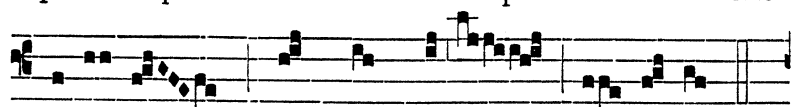


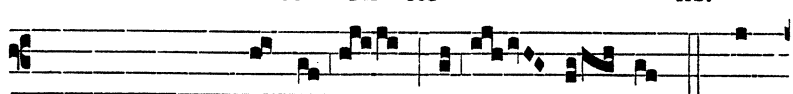
terram erit ligátum et in cæ- lis : * Et



quodcúmque sólveris su- per ter- ram erit



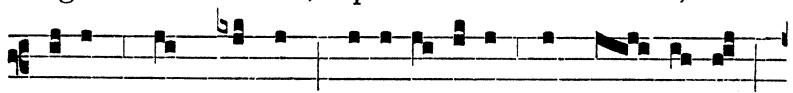
so-lú- tum et † In cæ- - lis.



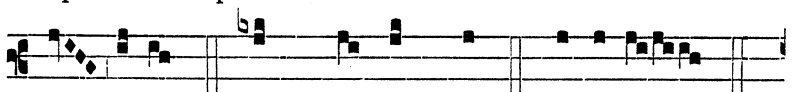
Temp. Pasch. † Al-le- - lú- ia. ∇. Et



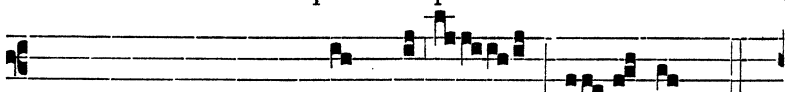
ego dico tibi, qui- a tu es Pe- trus, et



super hanc petram ædi- fi- cábo Ecclé- si- am



me- am. * Et quodcúmque. Gló- ri- a.



Extra Temp. Pasch. † In cæ- - lis.