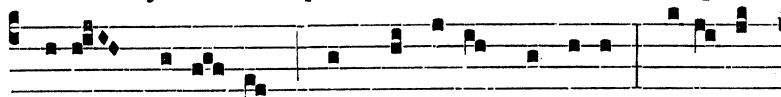


Temp. Pasch. † Al-le - lú- ia.

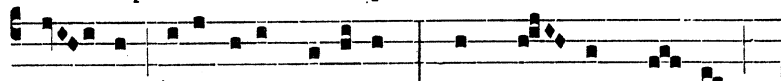
Hymnus

j.  
toni.

JAM bone pastor Petre clemens acci- pe



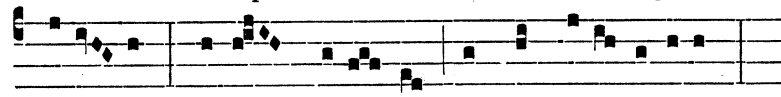
Vota precán-tum, et peccá-ti víncu-la Resólve,



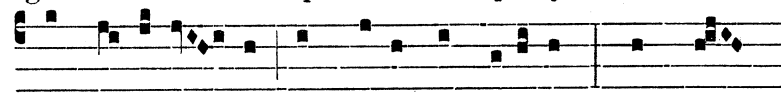
ti- bi potestáte trá-di-ta, Qua cun-ctis cæ- lum



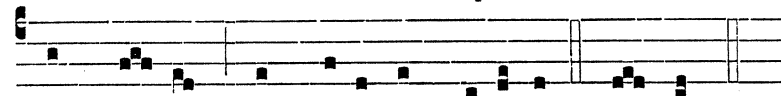
verbo claudis, áperis. 2. SIT Trini-tá-ti sempi-térna



glóri- a, Honor, poté- stas atque jubi- lá-ti- o,



In u-ni-tá- te, cui manet impéri- um, Ex tunc,



et mo- do per ætérna sæcu- la. A- men.

V. Tu es Petrus. R. Et super hanc petram ædificábo  
Ecclésiám meam.