

Cant. Magní- ficat. e u ó u a e.

DIE II. MAIL.

S. ATHANASII EPISCOPI ET CONFESSORIS.

DUPLIX.

Oratio.

**D**EUS, qui pópulo tuo ætérnæ salútis beátum Athaná-  
sium ministrum tribuísti : præsta, quæsumus, ut  
quem doctórem vitæ habúimus in terris ⁊ intercessórem  
habére mereámur in cælis : Per.

DIE III. MAIL.

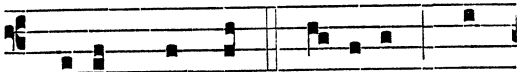
IN INVENTIONE SANCTÆ CRUCIS.

TOTUM DUPLIX.

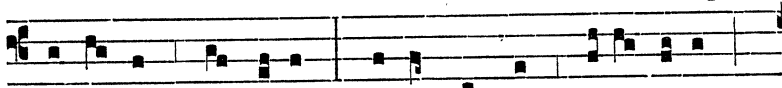
AD I. VESPERAS.

TEMPORE PASCHALI.

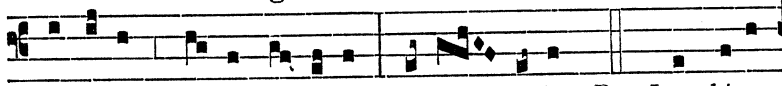
Super Ps. Ant.  
ij. toni.



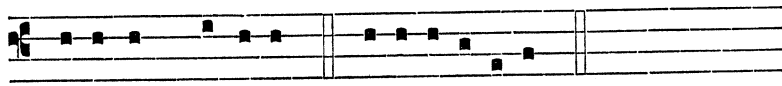
CRUCEM sanctam súb-i- it qui



inférnum confrégit : accínctus est potén-ti- a,



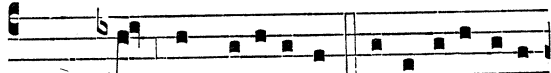
surréxit di- e tér-ti- a, alle- lú-ia. Ps. Laudáte



pú- e-ri Dóminum. e u ó u a e.

POST TRINITATEM.

Super Ps. Ant.  
j. toni.



O CRUX admirábi- lis, evacu- á- ti- o