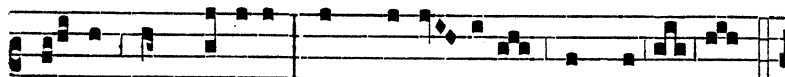
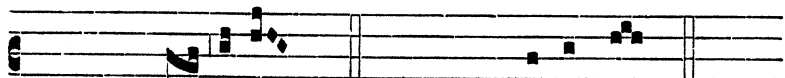




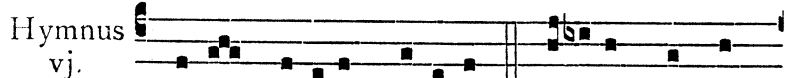
hostes nefá- ri- i. * Pártaque. Gló-ri- a



Pa- tri, et Fí- li- o, et Spi- rí- tu- i sancto.



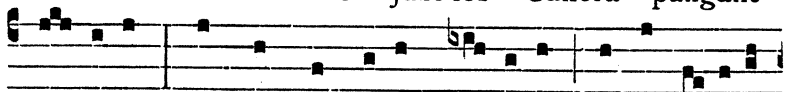
T. P. ✠ Al- lel. Post Trin. * Pártaque.



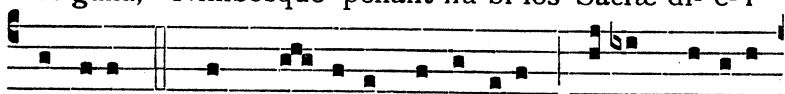
Hymnus

vj.
toni.

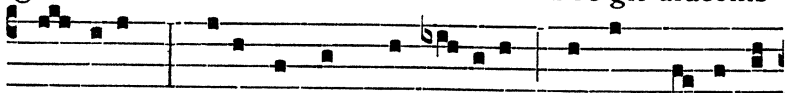
PI- o be- áto júbi- los Canóra pangant



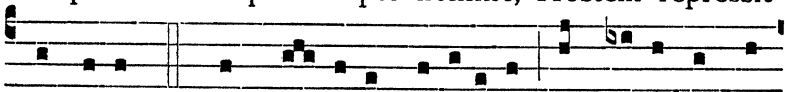
ór- gana, Nimbósque pellant nú- bi- los Sacræ di- é- i



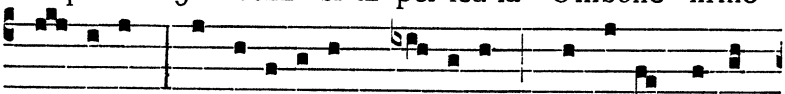
gáudi- a. 2. Hic Mí- cha- el certámine Fre- git draconis



ímpetum : Pi- íque sumpto nómine, Hostem représsit



ímpi- um. 3. ECCLE- SI- Æ per- ícu- la Umbóne firmo



dé- pu- lit : Secta- ri- órum spí- cu- la Mucróné forti