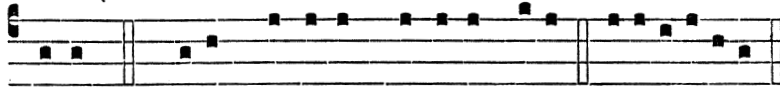


gregem su-um pa-vit, alle-lú-ia. Post Trin. gre-gem su-um



pavit. Ps. Dixit Dóminus Dómino me-o. e u ó u a e.

Capitulum, Hymnus et V. ut in j. Vesperis.

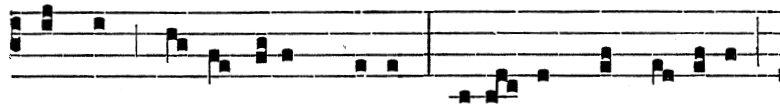
Ad Magnif.

Ant.

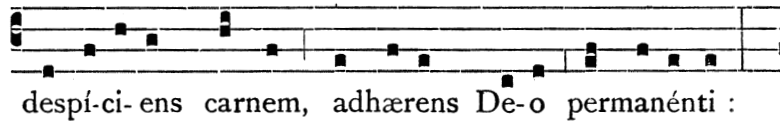
vij. toni.



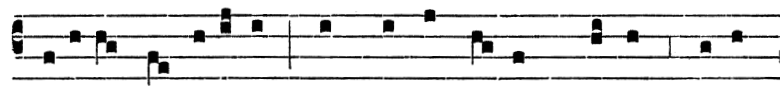
Dux fide- i, pi- etá-tis doctòr, mundi



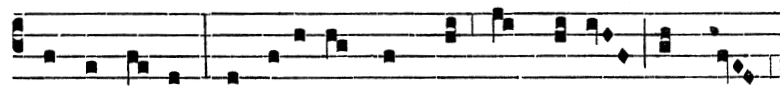
lampas, sa-cerdótum decor : fecí- sti quæ do-cébas,



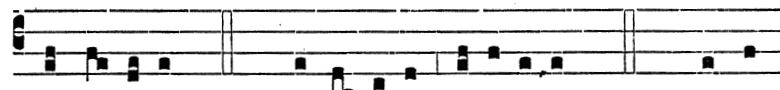
despí-ci- ens carnem, adhærens De-o permanénti :



be-áte Antoníne, cum ascendénte Christo cælos



ascendí-sti : ne dere-línquas nos órphanos in hoc



exsí- li- o. T. P. Alle- lú-ia, alle- lú-ia. Cant. Magní-