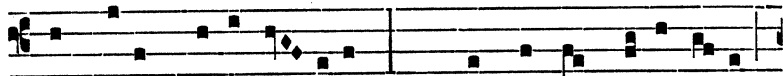


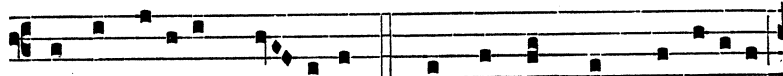
Fit ex lebete phi- a-la, In vas translá-ta gló-ri æ



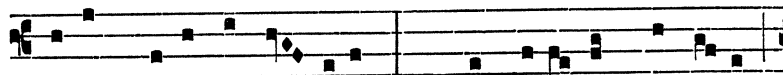
De vase contumé- li-æ. 4. ÆGRA currit ad médicum,



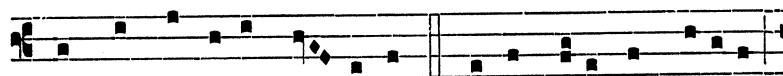
Vas ferens aromá- ticum, Et a morbo multipli-ci



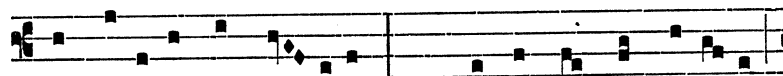
Verbo curátur mé- di-ci. 5. SURGENTEM cum victóri-a



Jesum videt ab ín- feris : Prima meré- tur gáudi- a



Quæ plus ardébat cé- te-ris. 6. UNI De-o sit glóri-a



Pro multi-fórmi grá- ti-a, Qui culpas et supplí-ci- a



Remíttit, et dat præ- mi- a. A- men.

V. Optimam partem elégit sibi María. R. Quæ non auferétur ab ea.