

- lú- ia. Ps. Laudáte pú-e-ri Dóminum.

e u ó u a e.

Capitulum.

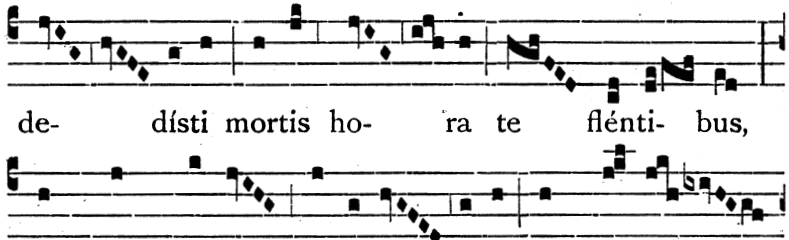
Eccli. 50.

QUASI stella matutína in médio nébulæ, et quasi luna plena in diébus suis ⁊ et quasi sol refúlgens : sic iste effúlsit in templo Dei.



Respon-
sorium
j. toni.

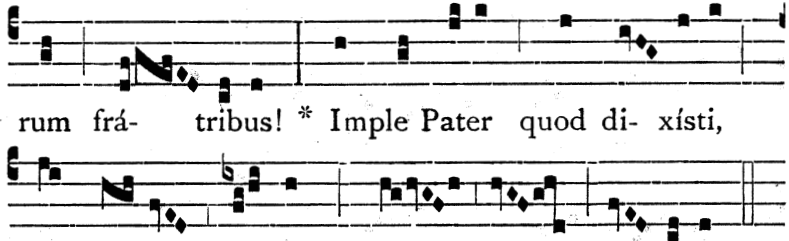
O SPEM mi- ram, quam



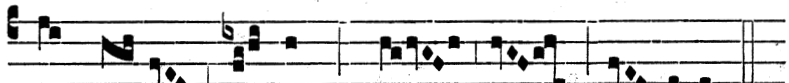
de- dísti mortis ho- ra te flénti- bus,



dum post mortem promi-sí- sti te pro-fu- tú-



rum frá- tribus! * Imple Pater quod di- xísti,



nos. tu- is ju- vans pré- cibus.