



dáte pú-e-ri Dóminum. e u ó u a e.

Capitulum.

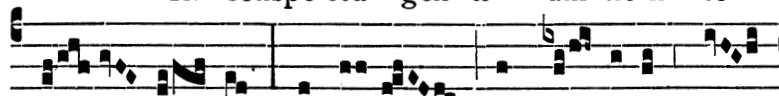
Exodi 23.

**E**CCE ego mittam Angelum meum, qui præcedat te, et custódiat in via ꝛ et introdúcat in locum quem parávi : obsérva eum, et audi vocem ejus.

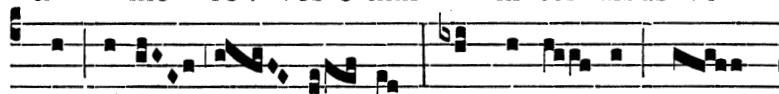
Respon-  
sorium  
j. toni.



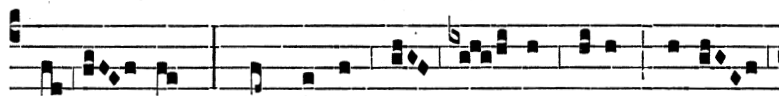
IN conspé-ctu gén-ti-um no-lí-te



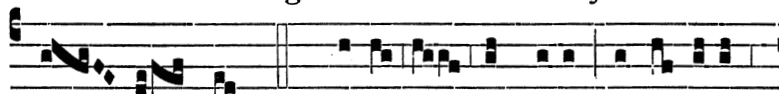
ti- mé-re : vos e-nim in cór-dibus ve-



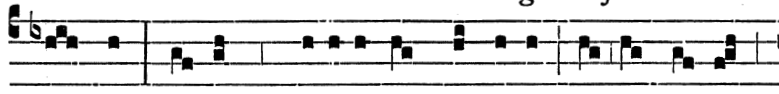
stris ado- rá-te et timé-te Dó-



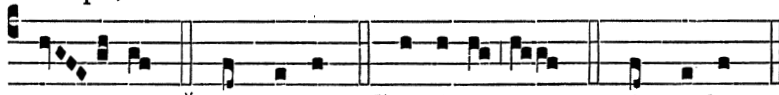
mi-num : \* Ange-lus e- nim ejus vobís-



- cum est. ∇. Ste-tit Angelus juxta aram



templi, ha-bens thuríbu-lum áure-um in ma-nu



su- a. \* Ange-lus. Gló-ri-a. \* Ange-lus.