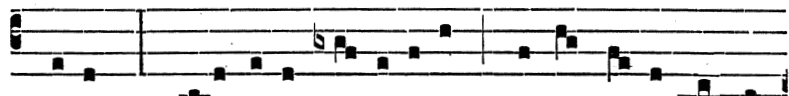
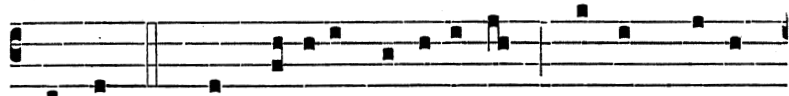


5. LEGI, Prophætæ, Grá-ti-æ Gratum gerens ob-sé-



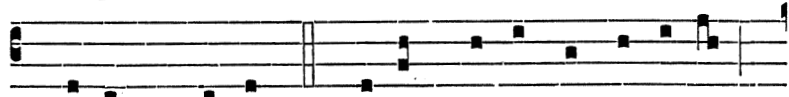
qui-um, Trini-tá-tis of-fí-ci-um Festo sol-émni cé-



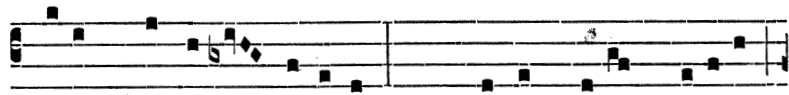
lebrat, 6. DUM réparat virtú-ti-bus Hospes triplex



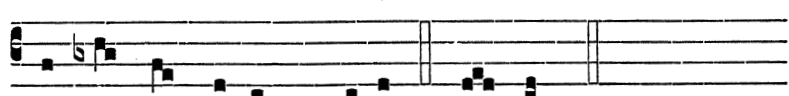
ho-spi-ti-um, Et be-atárum ménti-um Dum templum



Christo cónsecrat. 7. DOMUM, portam et túmu-lum



Pater Francíscæ ví-si-ta, Et Hevæ prolem míseram



A somno mortis éxci-ta. A-men.

✠ Infra Octavam Ss. Rosarii, post Strophén Domum, portam, etc., omisso Amen., addantur hæ duæ Strophæ :