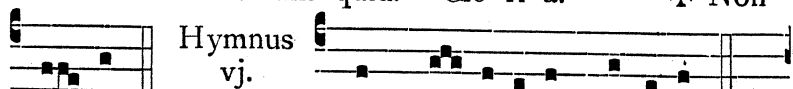
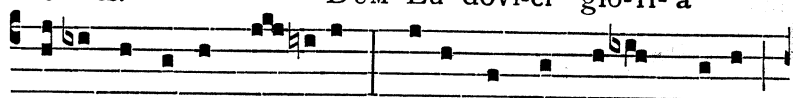


\* Et si mortí-fe-rum quid. Gló-ri-a. † Non

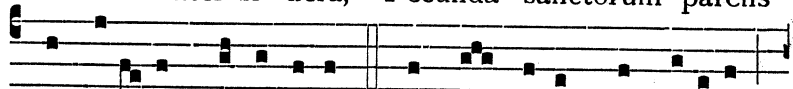


Hymnus  
vj.  
e- is. toni.

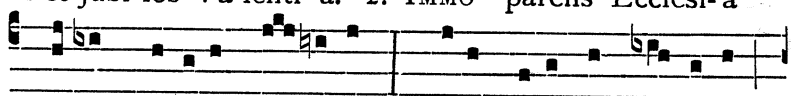
DUM Lu-doví-ci gló-ri-a



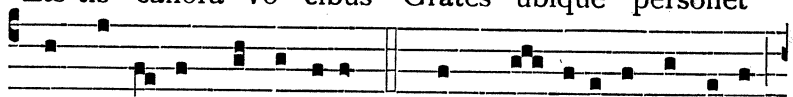
Co-rúscat inter sí-dera, Fecúnda sanctórum parens



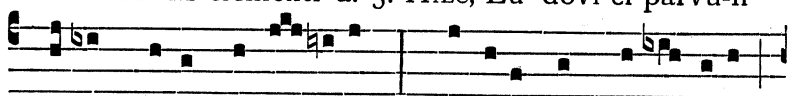
Det júbi-los Va-lénti-a. 2. IMMO parens Ecclési-a



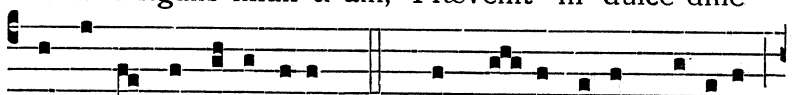
Læ-tis canóra vó-cibus Grates ubíque pèrsonet



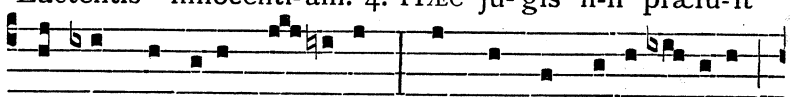
Pro Númi-nis clemé-nti-a. 3. HÆC, Lu-doví-ci párvu-li



Primam rigans infán-ti-am, Prævenit in dulcé-dine



Lacténtis innocé-nti-am. 4. HÆC ju-gis il-li præfu-it



Ad usque vitæ vé-speram, Armísque pœni-té-nti-æ